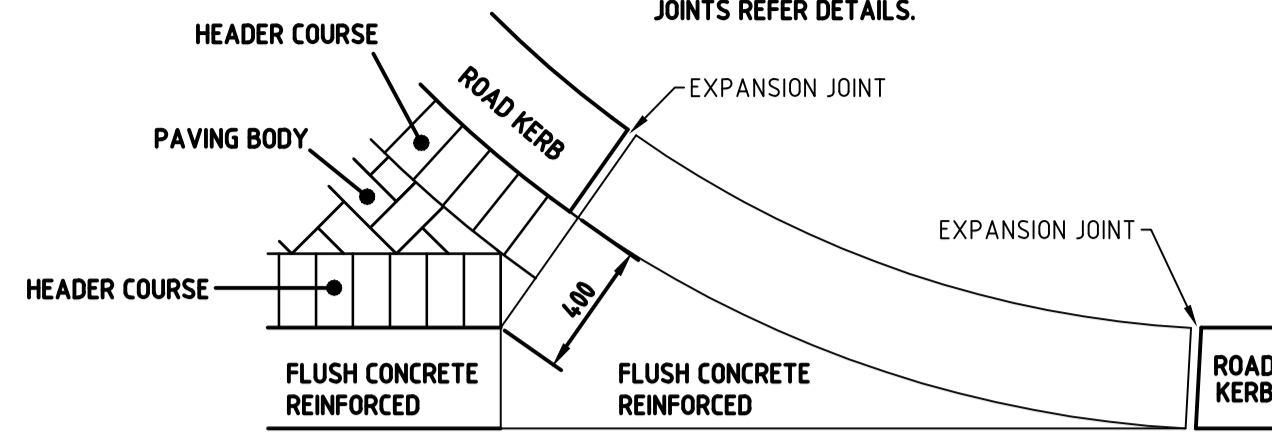
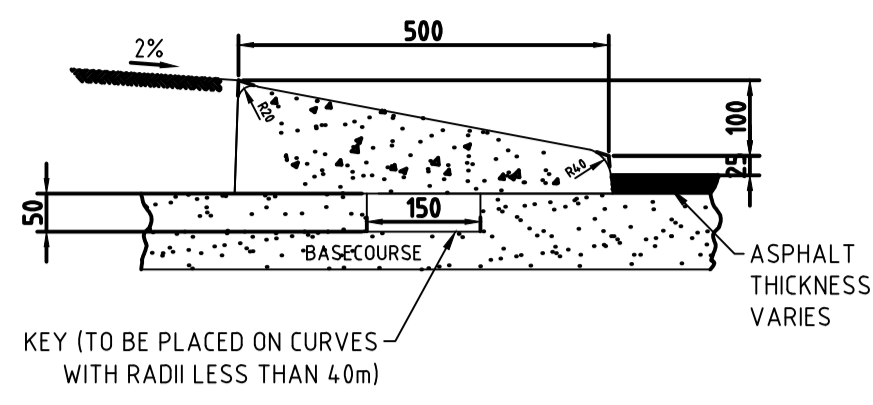


NOTES:

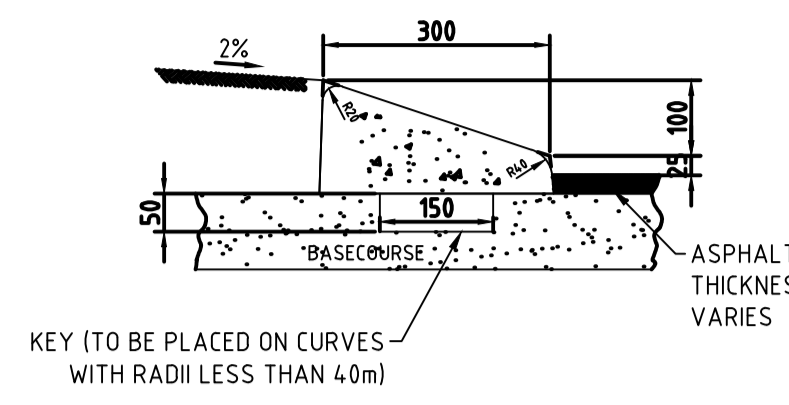
- 1.) FLUSH KERB, CONCRETE & ROAD KERB TO BE CAST MONOLITHICALLY.
- 2.) FOR CRACK CONTROL AND EXPANSION JOINTS REFER DETAILS.



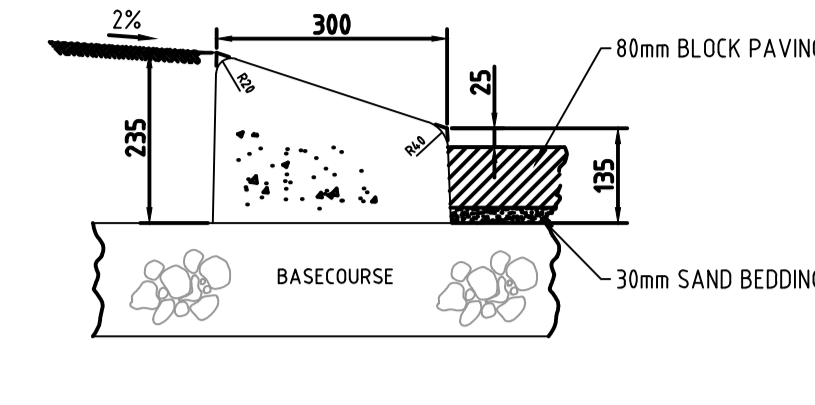
ENTRY STATEMENT / EYEBROW KERB TRANSITION DETAIL
N.T.S



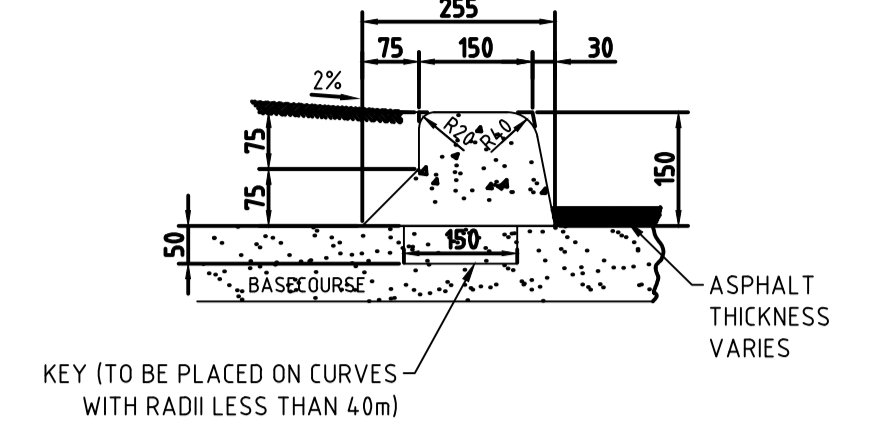
LAYBACK KERB
N.T.S



MOUNTABLE KERB
N.T.S

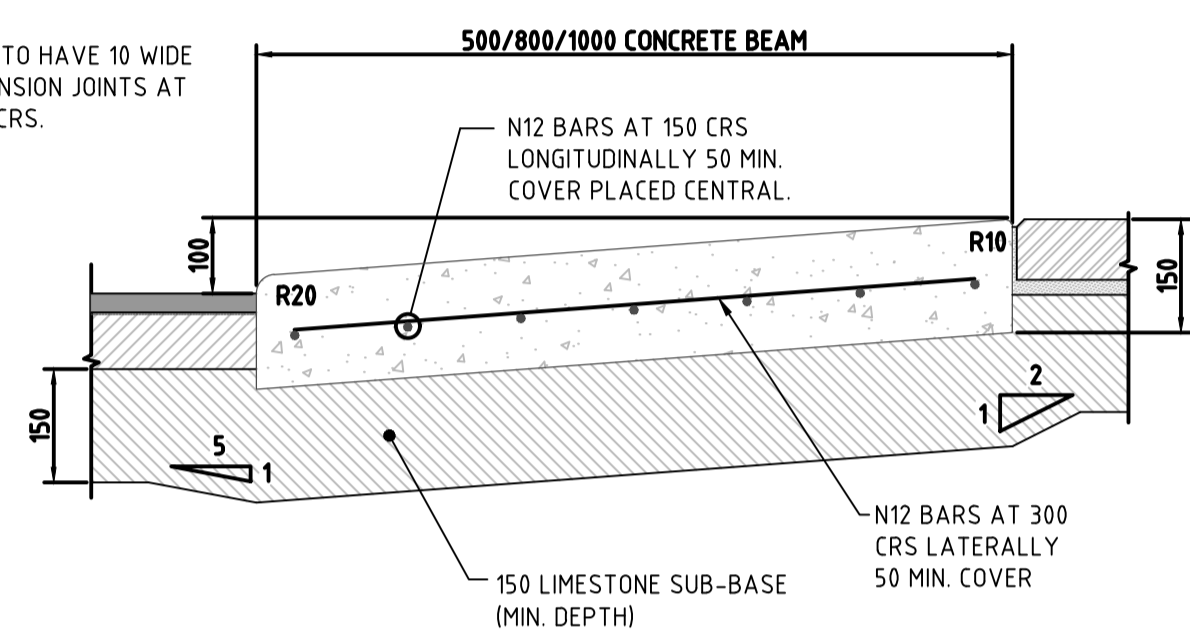


MOUNTABLE KERB FOR BLOCK PAVING
N.T.S

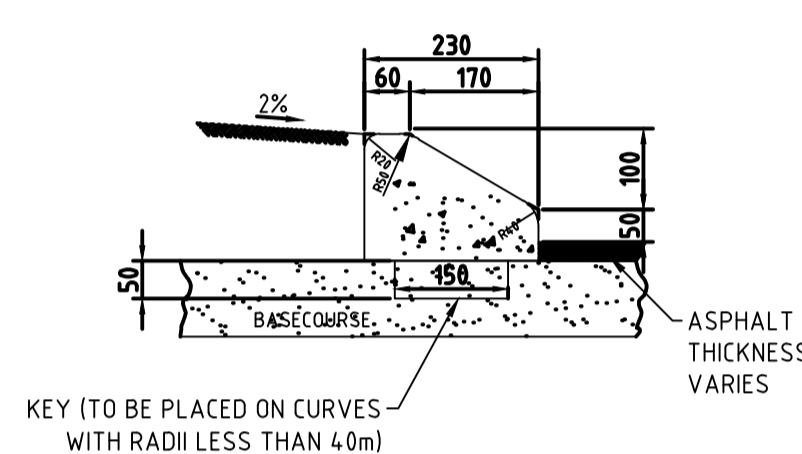


BARRIER KERB
N.T.S

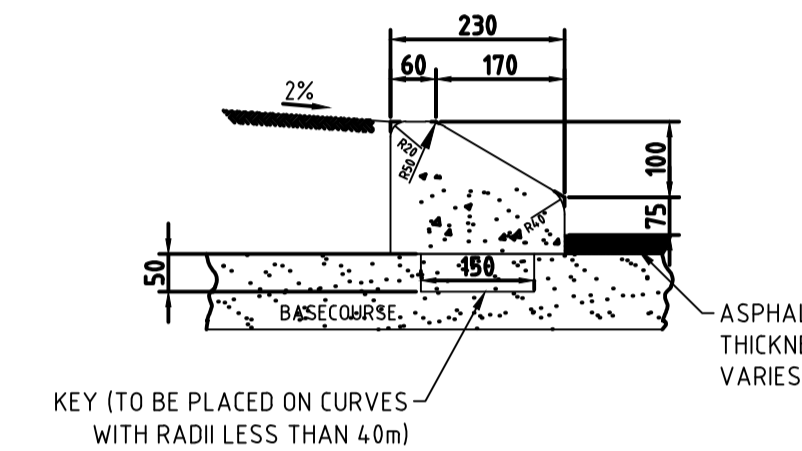
NOTE:
KERB TO HAVE 10 WIDE EXPANSION JOINTS AT 2500 CRS.



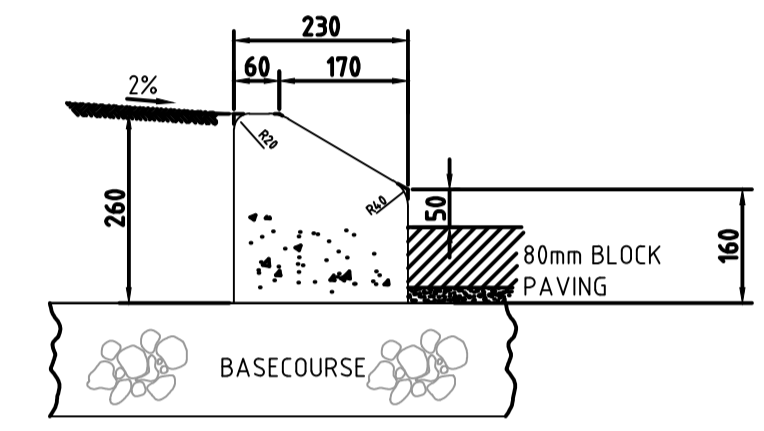
0.5/0.8m/1.0m WIDE REINFORCED FLUSH KERB - EDGE BEAM (FK2)
N.T.S



SEMI MOUNTABLE KERB - RESIDENTIAL
N.T.S

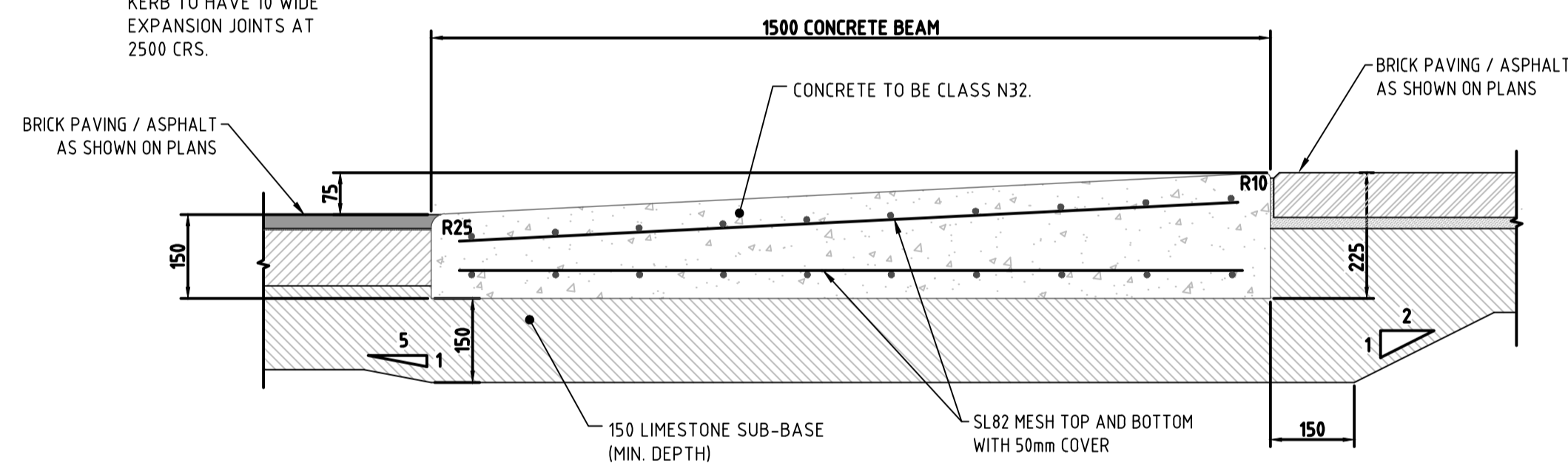


SEMI MOUNTABLE KERB - INDUSTRIAL
N.T.S

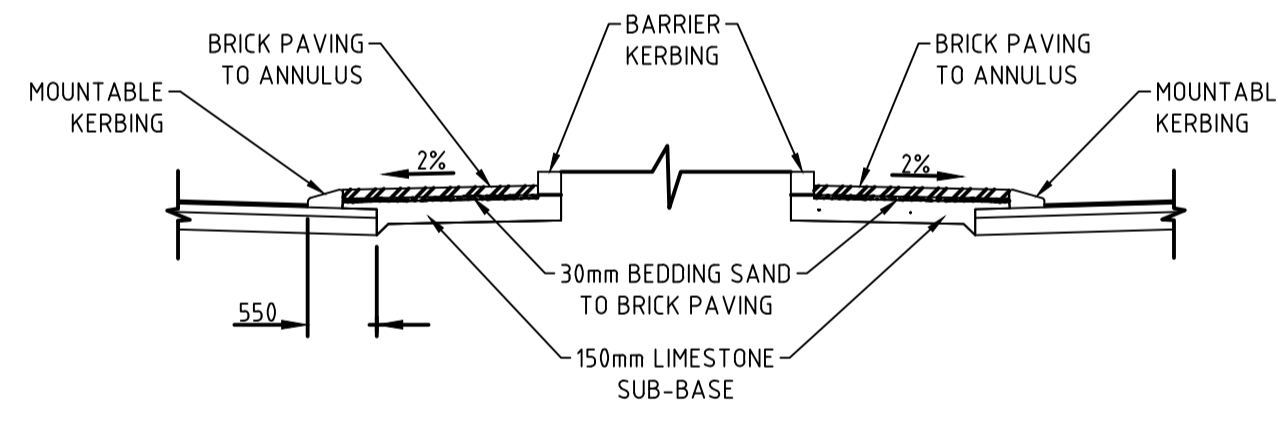


SEMI MOUNTABLE KERB FOR BLOCK PAVING
N.T.S

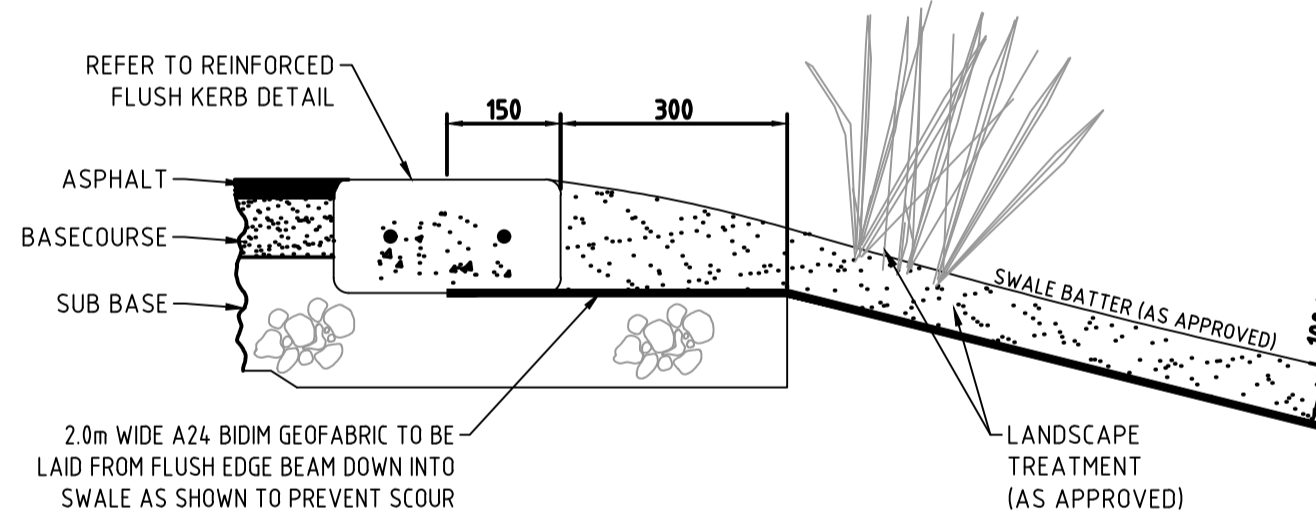
NOTE:
KERB TO HAVE 10 WIDE EXPANSION JOINTS AT 2500 CRS.



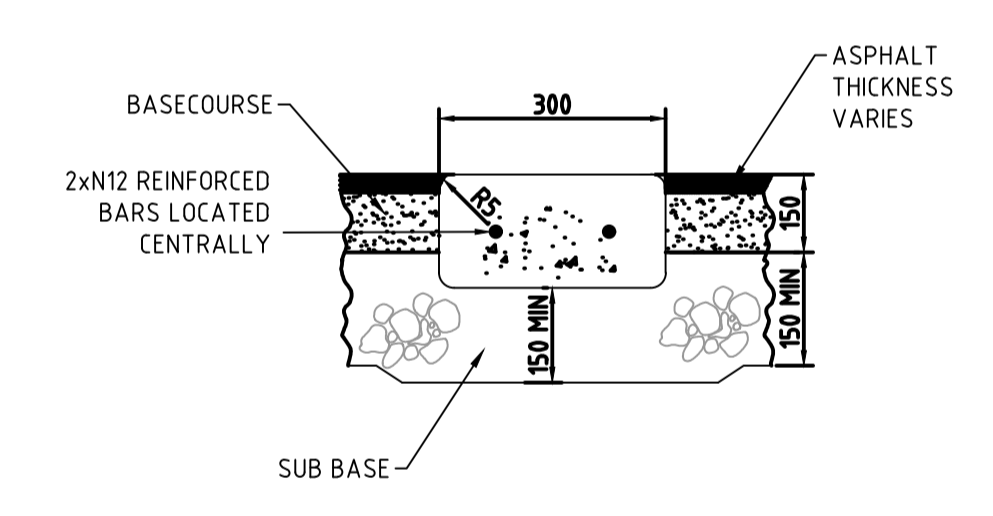
1.5m WIDE REINFORCED FLUSH KERB - EDGE BEAM (FK3)
N.T.S



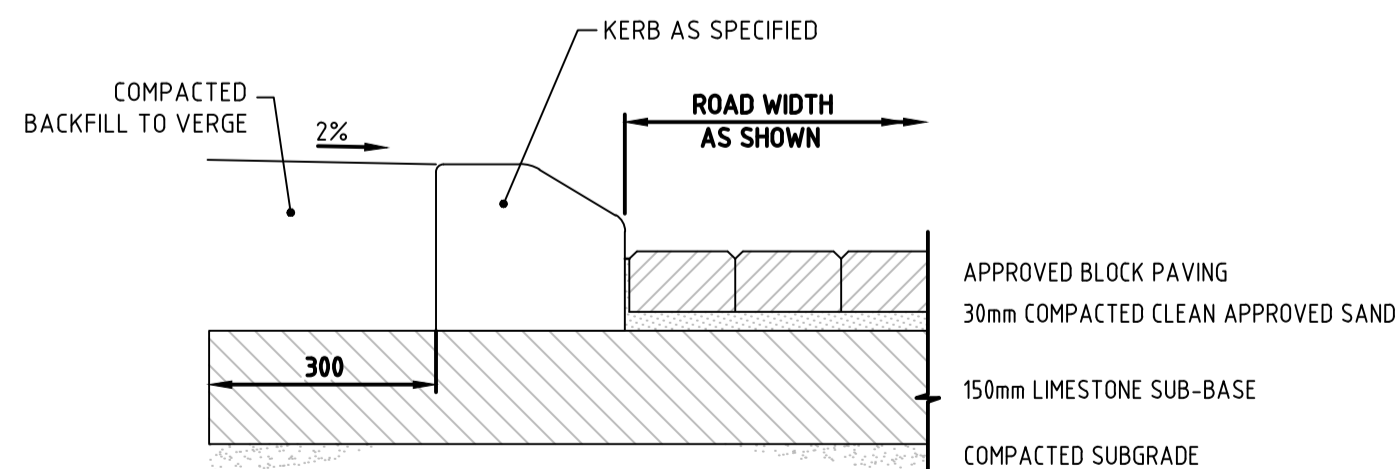
TYPICAL SECTION THROUGH ROUNDABOUT
N.T.S



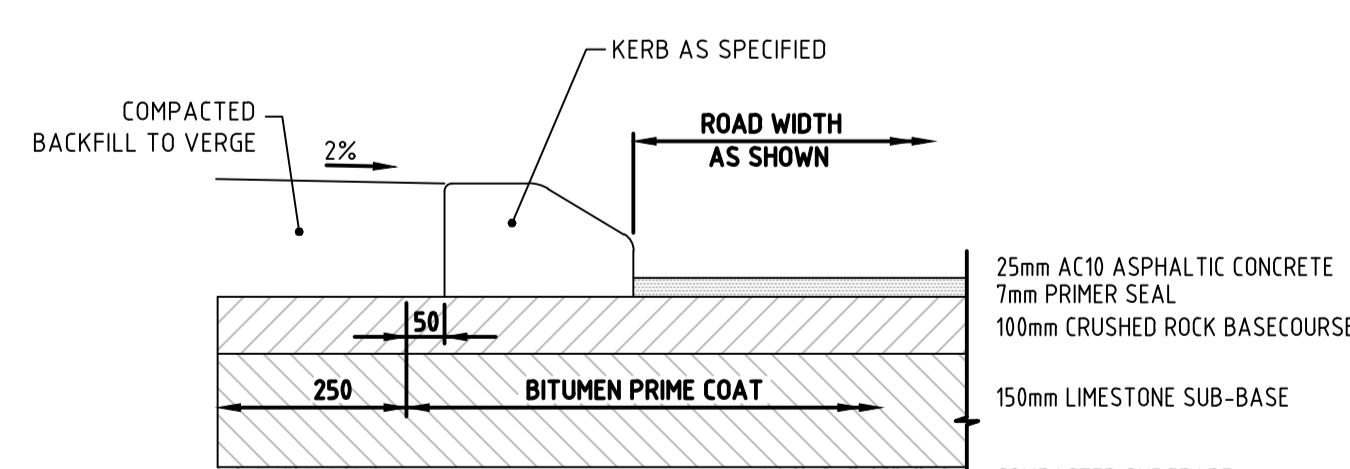
REINFORCED FLUSH KERB - SWALE SCOUR PROTECTION DETAIL
N.T.S



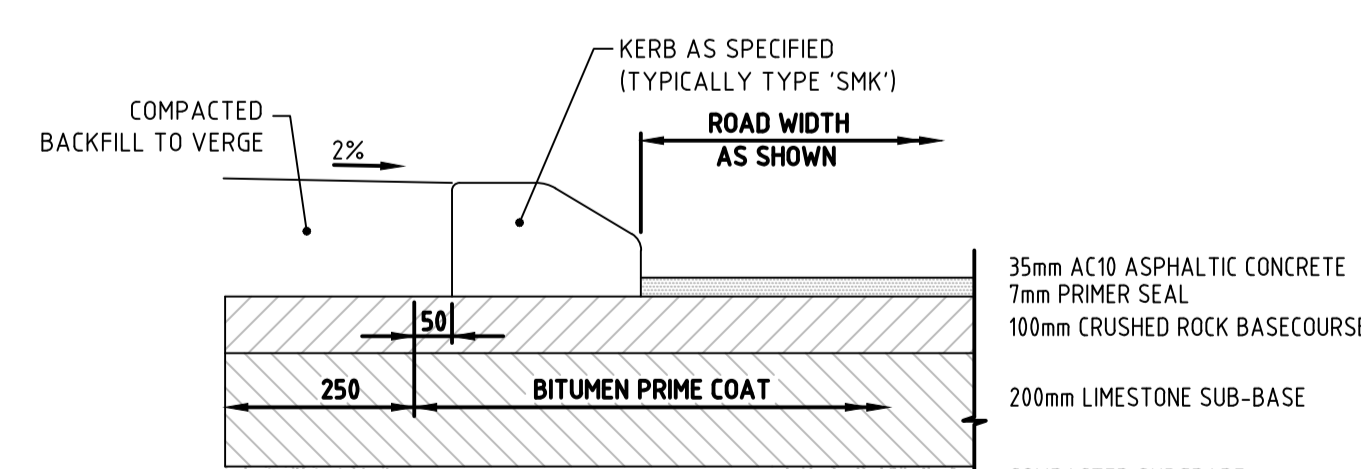
REINFORCED FLUSH KERB
N.T.S



PAVEMENT DETAIL - BRICK PAVING
N.T.S



PAVEMENT DETAIL - ASPHALTIC CONCRETE TYPE 1 (ALL ROADS U.N.O.)
N.T.S



PAVEMENT DETAIL - ASPHALTIC CONCRETE TYPE 2 (ARTERIAL ROADS ONLY)
N.T.S

KERB NOTES:

1. CONCRETE FOR KERBING SHALL BE CONFORM TO AS 1379-1991.
2. MINIMUM COMPRESSIVE STRENGTH 32MPa AT 28 DAYS.
3. MINIMUM AGGREGATE SIZE 10mm.
4. MAXIMUM SLUMP 50mm.
5. ALL KERBS TO BE KEYED(150 x 50mm) ON CURVE RADII LESS THAN 40m.
6. REINFORCEMENT TO BE STRUCTURAL GRADE STEEL COMPLYING WITH AS1302 GRADE 4.10Y.
7. NEW KERBING TO BE PROTECTED FROM TRAFFIC FOR A MINIMUM OF 7 DAYS AFTER INSTALLATION.
8. REFER TO STANDARD DRAWING NUMBER STD-R05 FOR TYPICAL EXPANSION & JOINTING DETAILS.

REV	DATE	DESCRIPTION	DRAWN
F	03/19	LAYBACK KERB (FOR CROSSOVERS) DETAIL ADDED	J.M
E	07/18	FLUSH KERB WITH SWALE SCOUR PROTECTION DETAIL ADDED	J.M
D	05/17	FLUSH KERB EDGE BEAMS, EYEBROW KERB TRANSITION & PAVEMENTS DETAILS ADDED	J.M
C	06/13	SEMI MOUNTABLE KERB PROFILES AMENDED	J.M
B	09/12	CITY OF KWINANA LOGO ADDED	J.M
A	04/09	ADOPTED BY TOWN OF KWINANA	V.K

ASSOCIATE CONSULTANT:	
-----------------------	--



PROJECT:		STANDARD DETAILS	
EXTRUDED KERBING & PAVEMENT DETAILS			
PHONE:	(08) 9439 0200	ADDRESS:	Cnr Gilmore Avenue and Sulphur Road, Kwinana WA 6167
FAX:	(08) 9439 0222		
EMAIL:	admin@kwinana.wa.gov.au		
WEB:	http://www.kwinana.wa.gov.au		

SCALE:	N.T.S (A1)
DESIGN:	S.S
CHECK:	R.N
DRAWN:	J.M
DATE:	05/17
AUTHORISED (MANAGER ENGINEERING SERVICES)	
R.NAJAFZADEH	

DRAWING TITLE	
STANDARD DETAILS EXTRUDED KERBING & PAVEMENT DETAILS	
FILE NO.	ENG03
DRAWING NUMBER	STD-R01
REVISION	F