

1.0 Development Contribution Plan 5 – Wandí

The development contribution area is shown on the Local Planning Scheme No. 2 (LPS2) scheme map as Development Contribution Area 5 (DCA5). The area is shown in Appendix 1 – Development Contribution Area 5 Wandí, however should there be any discrepancies between Appendix 1 and the area of DCA5 shown on the scheme map, the scheme map shall prevail.

2.0 Purpose

The purpose of this development contribution plan report is to:

- a) Enable the application of development contributions for the development of new, and the upgrade of existing infrastructure which is required as a result of increased demand generated in the development contribution area;
- b) Provide for the equitable sharing of the costs of infrastructure and administrative items between owners;
- c) Ensure that cost contributions are reasonably required as a result of the subdivision and development of land in the development contribution area; and
- d) Coordinate the timely provision of infrastructure.

Development within DCA5 and the identification of infrastructure items within this plan are guided by the following plans and documents:

- Jandakot Structure Plan (2007) – WAPC
- Draft Eastern Residential Intensification Concept (2005) – City of Kwinana
- Wandí North Local Structure Plan (2015) – Rowe Group
- Lot 12 (also referred to as Lot 677) Honeywood Ave, Wandí Local Structure Plan (2014)
- Wandí South Local Structure Plan (2014) – Rowe Group
- Draft Wandí District Centre concept plan (2014)
- Anketell North Local Structure Plan (2015) Rowe Group
- Anketell North Local Structure Plan Amendments 1, 2, 3 and 4 (2017/2018) – TBB
- Anketell South Local Structure Plan – Lots 1, 2, 3 & 17 Thomas Road & Portion Lot 13 Treeby Road, Anketell (2014) – Rowe Group
- Liveable Neighbourhoods (2009) – WAPC
- Development Control Policy 1.7: General Road Planning – WAPC

3.0 Period of the Plan

This plan will operate for 10 years from 3 October 2017 to 3 October 2027, in accordance with Local Planning Scheme No. 2.

4.0 Operation of Development Contribution Plan

This plan has been prepared in accordance with *State Planning Policy 3.6: Infrastructure Contributions* and operates in accordance with the provisions of section 5.15.5 Development Contribution Areas of LPS2.

5.0 Application Requirements

Where an application for subdivision, strata subdivision or development or an extension of land use is lodged which relates to land to which this plan applies, the local government shall take the provisions of the plan into account in making a recommendation on or determining that application.

6.0 Items included in the plan

This section of the DCP report identifies the infrastructure and land to be funded by development contributions collected from landowners within DCA5.

Asset ID	Item
1.0	Roads
1.1	Anketell Road
1.2	Lyon Road
1.3	Internal Collector (Honeywood Avenue)
2.0	Public Open Space
2.1	Public Open Space
2.2	Wandi Playing Fields
3.0	District Playing Fields
3.1	Casuarina District Sporting Ground
4.0	Community Facilities
4.1	Branch Library
4.2	Community Centre
4.3	District Youth Centre
5.0	Administration
5.1	Land valuations and advice Administrative expenses General legal expenses Preparation of management tools

6.1 Roads – Asset ID 1.0

6.1.1 Anketell Road – Asset ID 1.1

Anketell Road is classified as a District Distributor A Road and is currently constructed to single carriageway road to a rural standard. The traffic data from Main Roads WA indicates 3,682 vpd east of the Kwinana Freeway (2008)¹. Anketell Road has been identified as a potential freight route to the Naval Base / Kwinana Beach industrial areas. Should Anketell Road be classified as a primary freight route, local intersections will require upgrading.

It is estimated an additional 5,500 vpd movements will result from development of the northern adjoining Wandi South cell, bringing the total additional movements on Anketell Road to about 9,800 vpd. It is further estimated that traffic volumes on Anketell Road will increase by about 4,300vpd as a result of additional traffic generated from development within DCA4 (4,000 vpd from Anketell North LSP and 300 vpd from Anketell South LSP)^{2&3}.

¹ Anketell (North) Local Structure Plan July 2010, Appendix 5: Traffic Report (Transcore), June 2010, page 4.

² Ibid, page 10.

³ Anketell (South) Local Structure Plan ___, Appendix 10: Traffic Report (Transcore), Oct 2013, page 9.

To improve the capacity and contribute to overall traffic network efficiency, Anketell Road is to be upgraded to a single carriageway urban standard westward from Treeby Road, including reconstruction and realignment, treatment of intersections, kerbing, undergrounding of power, lighting, construction of a 2.5m wide dual use path, drainage and landscaping.

6.1.2 Lyon Road – Asset ID 1.2

Lyon Road is classified as a District Distributor B road and is currently constructed to a rural standard with a 7.0m wide carriageway. It provides a north-south link through the suburbs of Wandi, Mandogalup, and Atwell connecting Rowley Road to the north to Anketell Road to the south.

Historical traffic data for the locality indicates traffic volumes of less than 1,000 vpd on Lyon Road, which is predominantly generated by local residents. As would be expected of a road parallel to a freeway, Lyon Road is not significantly attractive to through traffic⁴.

Traffic volumes on Lyon Road are expected to increase following development of DCA5, but are to be no more than 3,000 vpd. Lyon Road will therefore be classified as an Access Street.⁵

The upgrades to Lyon Road from its current rural standard to single carriageway urban standard, between Anketell Road and Rowley Road, will consist of a single carriageway urban standard, including full earthworks, carriageway, drainage, landscaping, undergrounding of power and all treatments (including intersections, roundabouts, lighting, kerbing and footpaths).

Lyon Road is anticipated to be used by all development within DCA5 and therefore all development will contribute to this item on a gross subdivisible area basis.

6.1.3 Internal collector (Honeywood Avenue) – Asset ID 1.3

The Wandi North and South LSPs comprise a north-south internal collector road to run the full length of DCA5 from Anketell Road to Rowley Road. This road will provide the primary north-south movement network for traffic within DCA5.

The internal collector road will be an Integrator B road. The internal collector road is expected to carry traffic volumes between 2,000 vpd and 7,500 vpd⁶. The internal collector road contribution item will include the full cost of design and construction, including full earthworks, carriageway, drainage, landscaping, undergrounding of power and all treatments (including intersections, roundabouts, lighting, kerbing and footpaths).

The internal collector road is expected to be used by all development within DCA5 and therefore all development will contribute to this item on a land area basis (gross subdivisible area).

6.2 Public Open Space

6.2.1 Public Open Space – Asset ID – 2.1

⁴ Wandi (North) Local Structure Plan 2009, Appendix 4: Local Structure Plan Traffic Report (Riley Consulting), January 2009, page 3.

⁵ Wandi (South) Local Structure Plan 2012, Appendix 6: Local Structure Plan Revised Traffic Report (Transcore), 2011, page 11.

⁶ Wandi (South) Local Structure Plan 2012, Appendix 6: Local Structure Plan Revised Traffic Report (Transcore), 2011, page 12.

Land acquisition and improvement costs for the provision of POS as per the adopted Wandi North and Wandi South Local Structure Plans will be coordinated by the development contribution plan. Costs will be apportioned on a pro rata gross subdivisible area basis for landowners within both the Wandi North and Wandi South Local Structure Plan areas.

It must be noted that the area comprising the Wandi District Centre has not been included in the POS item for DCA5, with no Local Structure Plan submitted as yet for this area. It is acknowledged that the majority of the Wandi District Centre will comprise Commercial land uses, with some residential land likely north of the Western Power powerline easement. The required POS within the Wandi District Centre will be determined separately via local structure planning, which will also be required to consider the combined Community Facilities site with a Branch Library, Youth Centre and Local Community Centre.

6.2.2 Wandi Playing Fields – Asset ID 2.2

The Wandi Playing Fields are an area of public open space for use as a local sports ground and playground, in conjunction with the future Wandi Primary School. The local sports ground is necessary to serve the future residents of DCA5 as recommended by the City's CIP 2018.

A significant portion of the Wandi Playing Fields are located outside of the Urban zone due to the need to provide a large and consolidated portion of land for the sports ground surface and to take account of the number of constraints on land within the Urban zone (e.g. wetlands, service easement corridors). There is an adjacent area of land comprising 4,928m², located immediately south of the Wandi Primary School site and adjoining the south-west corner of the sporting ground, that is designated as POS – Wandi Playing Fields in the Wandi North LSP. This area of land, which is within the Urban zone, is an integral part of the Wandi Playing Fields and will be used for public carparking and hard courts for users of the playing fields and associated pavilion (which has been identified in the City's CIP 2018).

6.3 District Sporting Ground – Asset ID 3.0

6.3.1 District Sporting Ground (Casuarina) – Asset ID 3.1

The City's CIP 2018 identifies the need for a District Sporting Ground to service Districts A and B as defined in the CIP 2018. DCA5 is located within District A.

The land acquisition and land improvement costs for this facility are to be shared across development within Districts A and B (DCAs 2-7) on a pro rata gross subdivisible area basis. The costs of buildings on the site will be administered and collected under the City's community contribution development contribution plans (DCAs 8-15).

6.4 Community Facilities – Asset ID 4.0

The City's CIP 2018 identifies the need for a District Sporting Ground to service Districts A and B as defined in the CIP 2018. DCA5 is located within District A.

The City's revised CIP 2018 includes three community facilities to be provided within the Wandi District Centre however as the Wandi District Centre will likely be zoned commercial, there may not be a ready 'trigger' for land for these facilities to be provided through the standard POS processes (as is the case for community facilities within residential subdivision). Consequently, it does seem prudent that land for these facilities be provided through development contribution plans.

The three community facilities to be located within DCP 2 – 7 (as per 2018 CIP) are:

6.4.1 Branch Library – Asset ID 4.1

- Conceptual land requirement as a standalone facility of 0.8ha
- Serves the population of Districts A and B (Wandi, Anketell North, Mandogalup, Anketell South, Casuarina, Wellard East and Wellard West / Bertram)

6.4.2 Local Community Centre – Asset ID 4.2

- conceptual land requirement as a stand-alone facility of 0.5ha
- serves the future population of Wandi and Anketell North only

6.4.3 District Youth Centre – Asset ID 4.3

- conceptual land requirement as a standalone facility of 0.7ha
- Serves the population of District A only (Wandi, Anketell North and Mandogalup)

The City has explored the opportunity to provide the local community centre and branch library on a combined site, potentially within a two-storey building. Conceptual designs for the Wandi District Centre have included a 'main street' from Anketell Road through to Cordata Avenue (southern extension of Honeywood Ave). The main street would have retail and entertainment uses at ground level and a two-storey community facility building along this street could be an excellent attractor and focus for the area. The additional benefit is that there is a reduced cost to the applicable DCPs for the land acquisition component.

The CIP was consequently revised in 2021 to replace the Branch Library (referred to as District A Library) with a District Multi-purpose Community Facility. This combined facility replaces the Local Community Centre and District Youth Centre. The current scheme continues to refer to the facilities in the 2018 CIP, however Amendment 166 will update the DCP infrastructure items to reflect the revised 2021 CIP items.

Whilst the City is in the process of engaging an architectural firm to design the local community centre and branch library combined facility, conceptual drawings for the facility indicate the buildings and parking could be built on approximately 1.61ha of land. The area within the power line easements could potentially be used for car parking, although this will require more detailed design and consultation with Western Power.

As mentioned above, the three facilities serve different purposes and have three different catchments. The cost apportionment for the land acquisition therefore needs to reflect the different catchments in order to satisfy the need and nexus relationship. The recommended way to apportion these costs is demonstrated in the table below:

Facility	Land component as a stand-alone facility	Proposed combined facility proportion of land component
Local community centre	0.5ha	0.35ha
District Youth Centre	0.7ha	0.7ha
Branch Library (serves Districts A and B)	0.8ha	0.56ha
Total	2.0ha	1.61ha

The City's most recent land valuation within Wandi valued land at **\$1,320,000** per hectare. Applying this rate indicates the total value of land (1.61ha) to be acquired is approximately **\$2,125,200**.

6.5 Administrative costs – Asset ID 5.0

Administrative costs included in the DCP area generally consist of:

- Land valuations and advice
- Administrative expenses
- General legal expenses
- Preparation of management tools

7.0 Estimated Costs

Details of the cost apportionment can be seen in the Cost Apportionment Schedule.

Refer to Appendix 4 – Schedule of Costs for each infrastructure and administrative item.

7.1 Roads – Asset ID 1.0

7.1.1 Anketell Road upgrade – Asset ID – 1.1

The cost contribution for DCA5 towards the Anketell Road upgrade is estimated to be **\$7,897,569.10**

7.1.2 Lyon Road Upgrade – Asset ID 1.2

The cost contribution for DCA5 towards for the Lyon Road upgrade is **\$4,887,850**

7.1.3 Internal Collector Honeywood Avenue – Asset ID 1.3

The cost contribution for DCA5 towards Honeywood Avenue is estimated to be **\$12,145,409**

7.2 Public Open Space

7.2.1 Public open space – Asset ID 2.1

The cost contribution for DCA5 towards the POS (9.5% of the GSA, deducting the GSA for the Wandi District Centre is 12.0853ha) is **\$14,145,738 + \$11,312,018 = \$25,457,756**.

7.2.2 Wandi Playing Fields – Asset ID 2.2

The cost contribution for DCA5 towards Wandi Playing Fields is estimated to be **\$7,002,332**

7.3 District Sporting Ground – Asset ID 3.0

The costs for DCA5 for the District Sporting Ground are estimated at **\$725,430.25**

7.4 Community Facilities – Asset ID 4.0

7.4.1 Branch Library – Asset ID 4.1

The cost contribution for DCA5 towards the branch library is **\$95,751.92**.

The apportionment of that facility across the various DCA's is shown on Appendix 4 – Schedule of Costs.

7.4.2 Local Community Centre – Asset ID 4.2

The cost contribution for DCA 5 towards a local community centre is **\$282,041.41**.

The apportionment of that facility across the various DCA's is shown in Appendix 4 – Schedule of Costs.

7.4.3 District Youth Centre – Asset ID 4.3

The cost contribution for DCA5 towards a district youth centre is **\$387,634.92**.

.

The apportionment of that facility across the various DCA's is shown in Appendix 4 – Schedule of Costs.

7.5 Administrative costs – Asset ID 5.0

Administrative costs are the actual administration costs of administering the DCP, including the year leading up to the annual review (up until June 2024).

8.0 Method of calculating contribution

Development contributions will be apportioned on a land area basis – either Developable area or Gross Subdivisible Area. This allows for a simple, predictable method of apportioning costs which reduces the administrative burden on the DCP and enables the City to accurately advise prospective developers of the DCP costs.

Gross subdivisible area is defined as per Liveable Neighbourhoods, Western Australian Planning Commission.

Developable area is defined as the total site area less areas for schools, community facilities, dedicated drainage reserves, regional open space, Environmental Protection Policy areas, transmission and infrastructure corridors, and land for regional roads.

9.0 Priority and timing of infrastructure delivery

Due to the fragmented land ownership of DCA5 it is difficult to accurately predict the delivery of infrastructure within the cell. Nonetheless, the below table estimates the timing of development.

Priority	Infrastructure item	Anticipated timing	Comment
1	Internal collector road	Final portion of Honeywood/Cordata Avenue to be constructed at the time the future Wandil-Anketell District Centre is	Has been largely completed during subdivision of stages within Wandil North and Wandil South Local Structure Plan areas (Honeywood Ave).

		constructed, estimated in 3-6 years.	Cordata section is remaining and will be delivered as part of the District Centre.
2	Lyon Road	Complete	Complete
3	Public Open Space	Complete	Completed by all relevant landowners during the subdivision stage.
4	Wandi Playing Fields	Largely complete. Small triangular section 2-3 years	Largely constructed by Satterley Property Group during adjoining subdivision stages. Land acquisition for remaining 'triangle' is underway.
5	Anketell Road	2-5 years	May be provided in part during subdivision of lots adjoining Anketell Road and during development of the Wand District Centre, in conjunction with Main Roads WA.
6	District Sporting Ground (land component – acquisition and basic improvements)	5-8 years	Required prior to and to tie-in with the City's Community Infrastructure Plan Capital Expenditure Schedule. Community infrastructure construction currently scheduled for 2028-2030.
7	Community Facilities (land component – acquisition and basic improvements)	5-8 years	Required prior to and to tie-in with the City's Community Infrastructure Plan Capital Expenditure Plan. Community infrastructure construction currently scheduled for 2029-2031.

10.0 Payment of contributions

10.1 Payment of contributions

The landowners' liability for cost contributions will arise in accordance with clause 5.15.5.13 of LPS2 and Local Planning Policy 4: Administration of Development Contributions.

The Cost Apportionment Schedule will determine the cost of each infrastructure item as follows:

Total estimate/actual cost of infrastructure item less any payments made from developers in the DCA area less any interest earned for the DCA area where there are surplus funds and interest has been earned = total liability of undeveloped lots payable.

The total liability of undeveloped lots payable for each infrastructure item will then be divided by the total gross subdivisible area or developable area (depending on the basis of the infrastructure calculation) to calculate a per hectare rate for the infrastructure item.

The landowner's liability for cost contributions is calculated based on the total gross subdivisible area or developable area (whichever is applicable) multiplied by the per hectare rate for the total liability of undeveloped lots payable for each infrastructure item.

10.2 Pre-funded infrastructure works

LPS2 allows for development contributions to be paid for in the form of works in kind provided that the contribution is provided in accordance with the Priority of Works, at the standard and costs, as pre-approved by the City of Kwinana. This provision allows the dedication of land, construction of capital works or other service in lieu of a monetary contribution for future urban development. Refer to the City's Local Planning Policy 4: Administration of Development Contributions for the procedures and required information.

It must be noted that all "works in kind" to be undertaken by the landowner/developer that relate to an infrastructure item within the DCP will only be accepted on the proviso that the City has approved the scope, cost estimate and detail of the works in accordance with Clause 5.15.5.14.1(c) of LPS2 prior to the works occurring and has entered into a Letter of Agreement with the relevant landowner/developer. Any reimbursement of DCP funds will occur in line with section 10.3.4 Reimbursement of DCP funds of this DCP Report.

10.3 Other Matters

10.3.1 Grant Funding

Generally, DCP infrastructure items do not attract grant funding. As part of the formulation of the liability of road infrastructure, developers are liable for costs based on the traffic they generate and only to an urban standard. All other liability falls with the City and the City is responsible for this share of the infrastructure works. Therefore, in the event that the grant funds received relate to works carried out over and above the developer contribution requirements, the developer will not benefit from this. The developer will not receive a reduction in liability. The City's contribution for constructing the road infrastructure over and above the urban standard will be reduced based on any grants received.

Such circumstances would be demonstrated via traffic modelling and the like, whereby existing and external users of a particular road may necessitate the need for a higher order road, but the need and nexus of proposed users within the respective DCA would justify the need for an urban standard, lower order road.

Where the City receives a grant for DCP infrastructure where the developer is liable to contribute to the works, the developer will receive a reduced liability for that DCP infrastructure item when the grant has been formally approved and the CAS has been adjusted accordingly as undertaken on an annual basis.

10.3.2 CPI for Infrastructure Constructed within DCA

As a result of the CAS being reviewed annually, there is no requirement to include CPI in any infrastructure items that have not been constructed. The cost of the infrastructure works is reviewed annually which would factor in any price increases or decreases of all future works and the amount required to be collected will be applied across the remaining lots to be developed.

For works already constructed, no CPI will be applied to any infrastructure works that a developer has carried out as an in-kind contribution, as the development company generally ceases to operate once development has occurred.

10.3.3 Interest

Interest applied across the DCA infrastructure items

Interest earned as part of funds in the DCA area is to be applied across all of the infrastructure items based on a pro rata amount paid towards each infrastructure item. The interest applied will be the actual interest earned for that period for the DCA area.

Interest applied to an infrastructure item where there are insufficient funds in the DCA to refund the developer who has carried out the works in kind

If there are insufficient funds in the DCA to refund the developer as a result of being approved credits for any works carried out, interest will only commence being calculated once the next Cost Apportionment Schedule review has been undertaken and approved by Council. A Cost Apportionment Schedule is reviewed annually and therefore once both the City of Kwinana and the Developer agree on the credit provided and determine whether there are sufficient funds to refund the developer, will interest commence calculating.

Interest will be calculated and credited to the developer using the Reserve Bank of Australia Cash Rate Target monthly average rate, which is the volume-weighted average interbank overnight interest rate on a per annum basis, and commence after Council has reviewed the Cost Apportionment Schedule for credits claimed after the previous Cost Apportionment Schedule approved by Council and the latest Cost Apportionment Schedule approved by Council. Interest will be calculated monthly using the previous months released monthly average rate divided by 12 months and multiplied by the amount outstanding to the developer (the amount due to be refunded to the developer). The interest calculated will be included in the cost of the relevant infrastructure item and updated in the CAS annually for the remaining developers in the DCA area to contribute to. The developer that is due the refund will not receive the interest calculated until such time as there are sufficient funds in the DCA account.

10.3.4 Reimbursement of DCP funds

Any reimbursement of DCP funds to the relevant landowner – in respect of agreements entered into between the City and the landowner for payment of cost contributions and the adjustment of final cost contributions thereof, or reimbursement to the landowner for approved DCP works undertaken – will only occur if sufficient funds are available within the relevant DCP account.

Once a DCP has been gazetted, the accompanying cost apportionment schedule adopted and all legal agreements for the particular DCP reconciled, then no further reimbursement(s) of DCP funds shall occur until all stages of the development are completed in instances where a particular development comprises several stages.

In addition, no interest earned on funds to be reimbursed shall apply to individual claims for reimbursement once the DCP has been finalised, the accompanying cost apportionment schedule adopted and all legal agreements for the particular DCP reconciled. Instead, all interest earned within the individual DCP account will serve to reduce the total cost contribution liability for the respective DCA as a whole.

10.3.5 Claims on Actuals

The costing attributable to a particular DCP item is comprised of either an estimate (where works for the item have not commenced or claims on actuals have not been received, and are reviewed and updated annually by independent, professional technical experts) and/or an actual amount for the approved works that have been undertaken.

Prior to works proposed to be undertaken on any approved infrastructure item as per this DCP, all plans and cost estimates are firstly to be approved by the relevant City Officer(s). A Deed of Agreement or Exchange Letter may first be required to be entered into between the City and the landowner(s) for this purpose.

To assist in the timely preparation of the annual cost apportionment schedule review by the City, all claims on actuals for approved works undertaken for DCP items must be received by the City by the end of December in any calendar year for inclusion as actuals against costings of the relevant DCP item.

Claims on actuals are required to be presented with the following information:

- A coversheet summary of the approved works undertaken for the relevant item;
- An itemised spreadsheet of claims relevant to the works undertaken detailing specific costs (GST exclusive) vis a vis works undertaken and the dates on which the works were undertaken; and
- Copies of the invoices relevant to the works undertaken.

It must be noted that the costing of actuals, if greater than the City's estimate for the particular item of infrastructure, will only be credited or reimbursed to the extent of the City's estimate as included in the CAS.

10.3.6 Two Year Establishment Cost

A two-year establishment period is applicable to all landscaping works for DCP items, including landscaping to roads, POS areas and Living Streams in the context of Sub-drains.

Similar to claims on actuals, actuals attributable to the two-year establishment period are to be provided to the City annually by the end of December in any calendar year, in order to be included in the ensuing annual update of the CAS.

Further, and similarly to claims on actuals, actuals attributable to two-year establishment costs are to be presented with the following information:

- A coversheet summary of the two years' establishment costs incurred to date;
- An itemised spreadsheet of claims relevant to the two years' establishment detailing specific costs (GST exclusive), establishment works undertaken and the date on which the specific establishment work was undertaken; and
- Copies of the invoices relevant to the works undertaken.

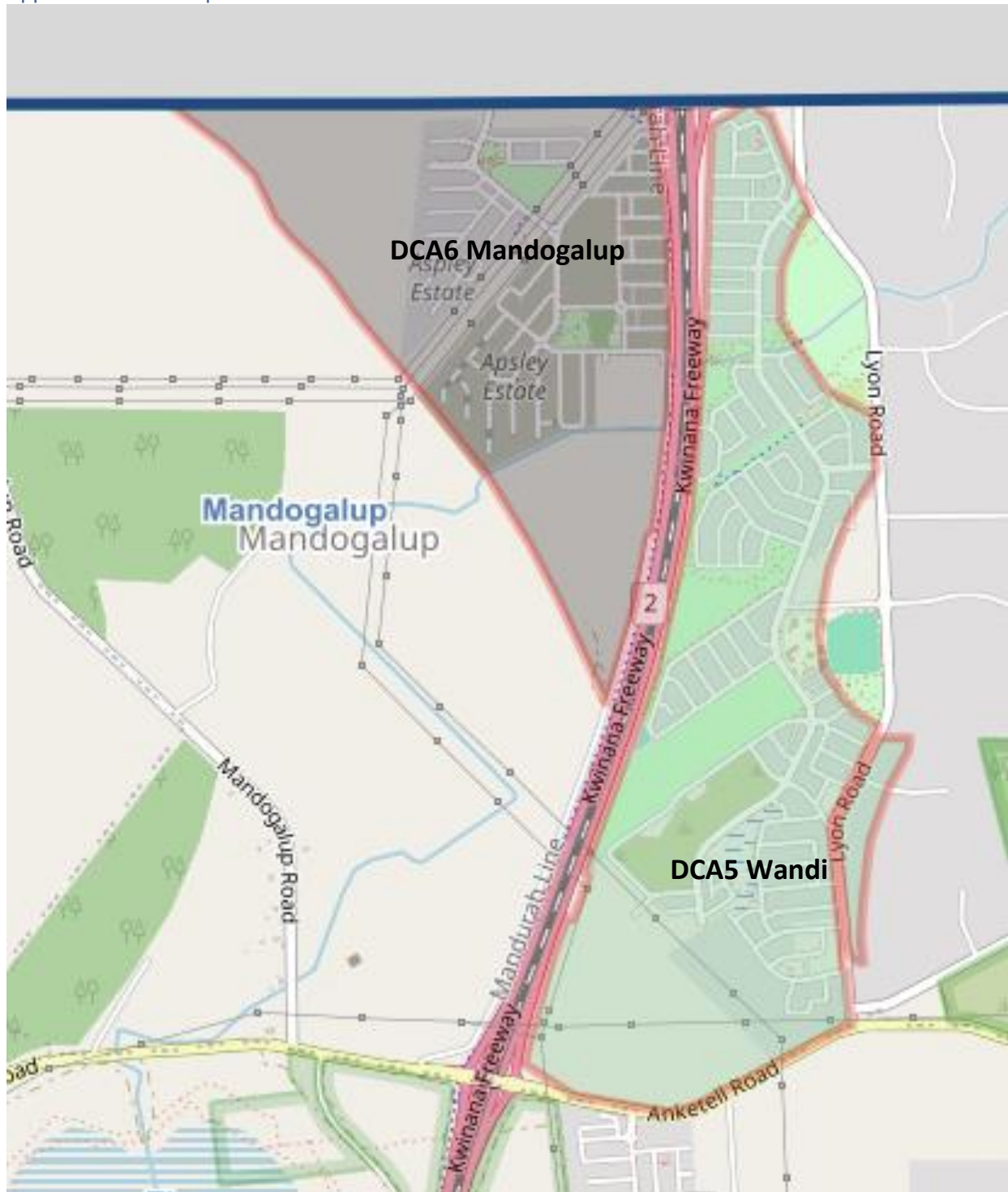
11.0 Review

This DCP will be reviewed five years from the date of gazettal of Amendment 100A to Local Planning Scheme No. 2, or earlier should the City consider it appropriate having regard to the rate of development in the area and the degree of development potential still existing.

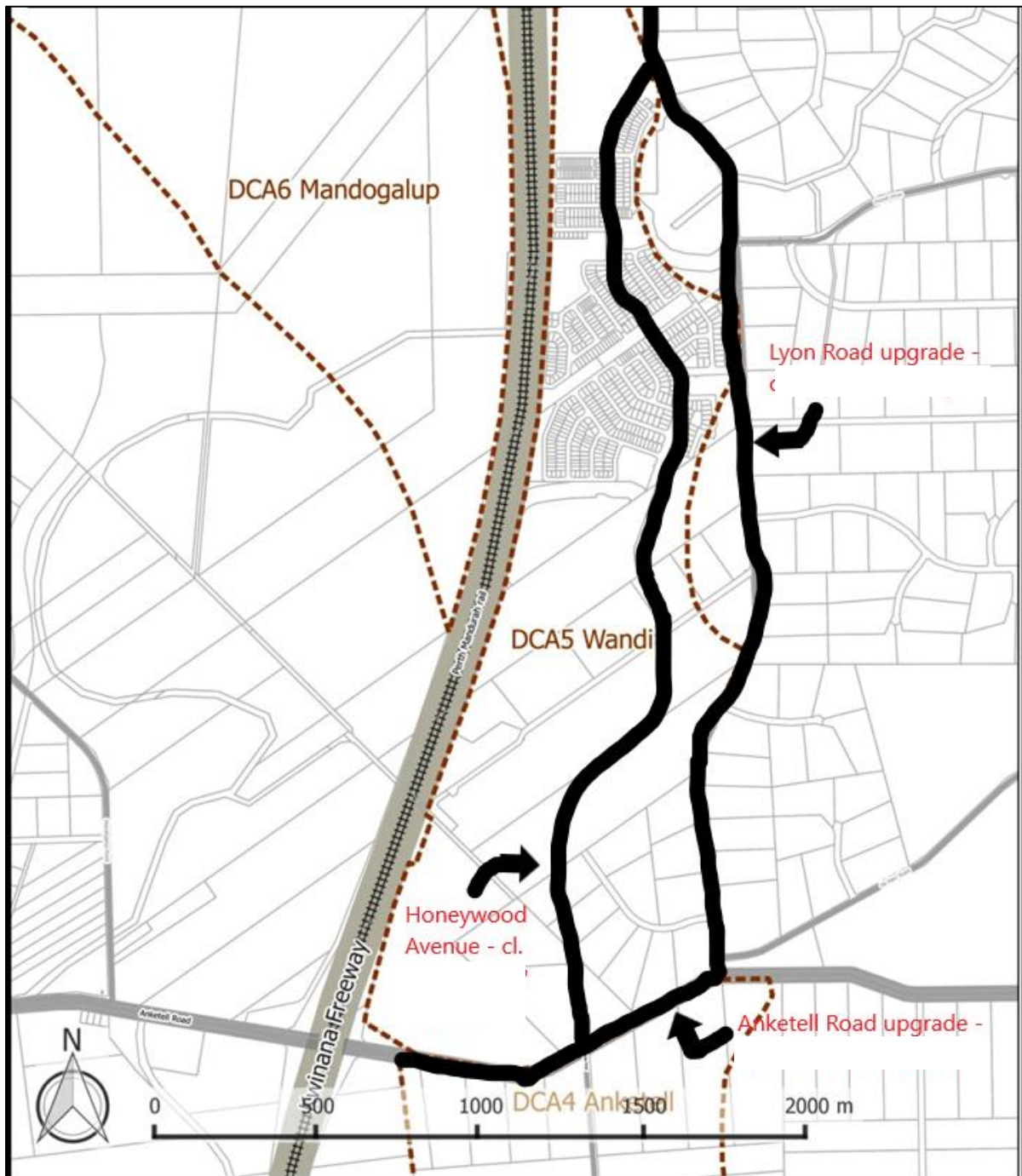
The estimated infrastructure costs as shown in the cost apportionment schedule will be reviewed at least annually to reflect changes in funding and revenue sources.

Appendices

Appendix 1 – Development Contribution Area 5 Wandi

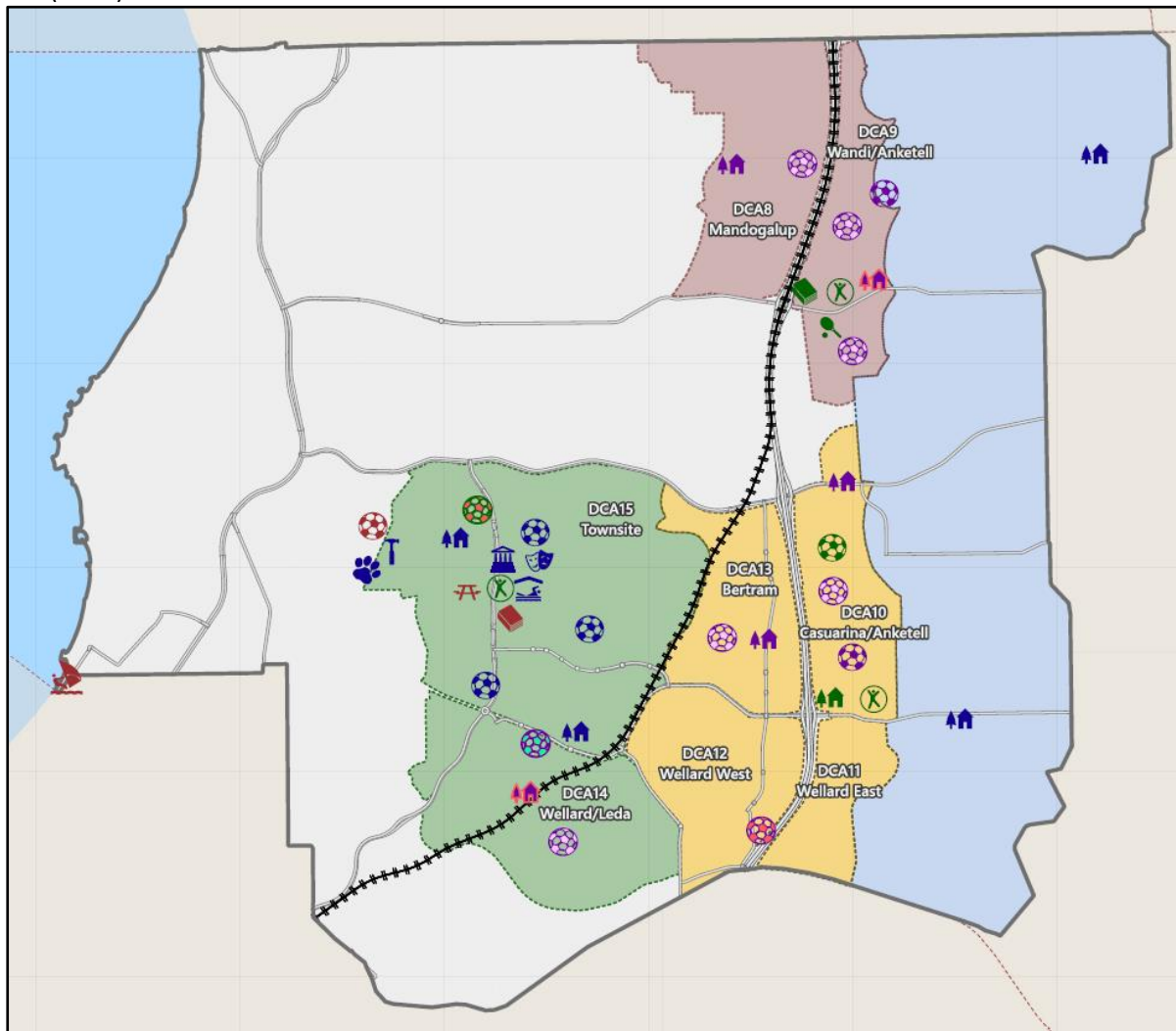


Appendix 2 – Road Infrastructure Spatial Plan

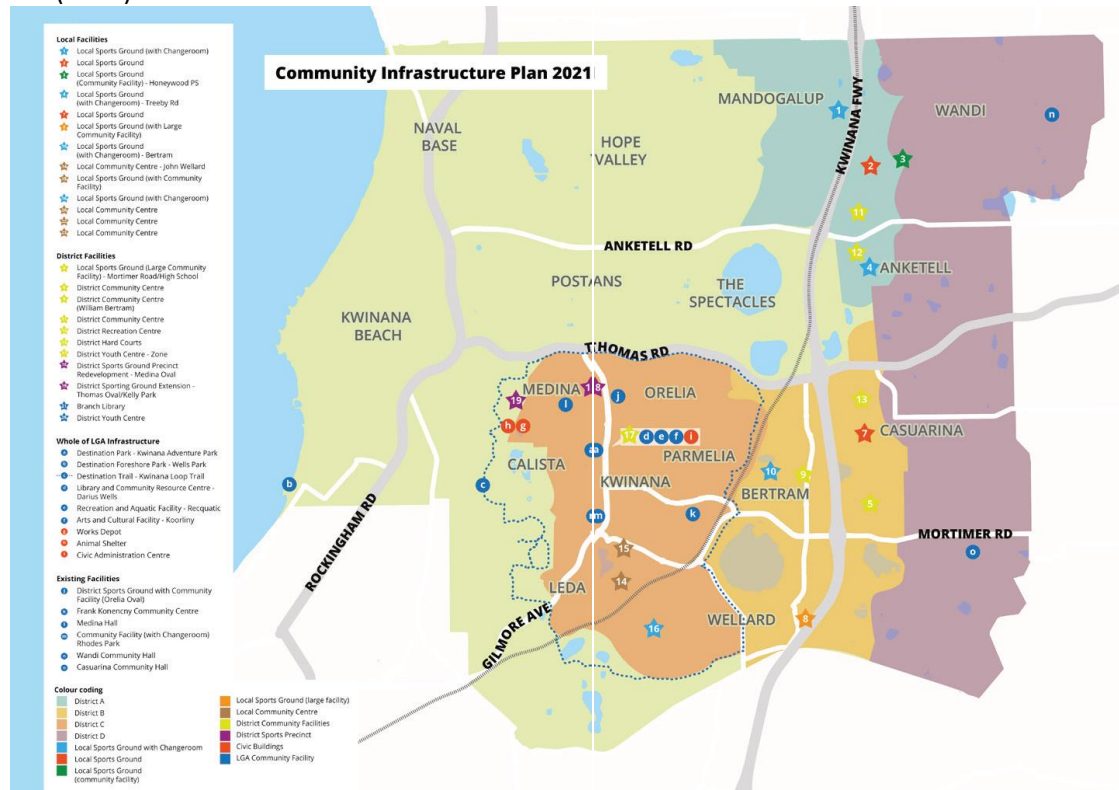


Appendix 3 – Community Infrastructure Plan Spatial Plan

CIP (2018)



CIP (2021)



Appendix 4 – Schedule of Costs

Anketell Road upgrade – Asset ID – 1.1

The total cost of the Anketell Road upgrade, including land acquisition, traffic management, design, construction, landscaping and contingency (20%), is estimated to be **\$7,897,569.10**.

Given that Anketell Road will be used by new development on both its northern and southern sides, the costs of the upgrades have been distributed based on a proportionate land area basis, demonstrated in the following table:

Development Contribution Area	Developable Area	Proportion	Contribution
4 – Anketell	106.36	43.48%	\$ 6,075,082.10
5 – Wandi	138.27	56.52%	\$ 7,897,569.10
Total	244.6363	100.00%	\$ 13,972,651.20

Lyon Road Upgrade – Asset ID 1.2

The cost for the Lyon Road upgrade is **\$4,887,850**, which is based on actuals provided by Satterley Property Group (acting on behalf of the Wandi Anketell Holdings Pty Ltd and Pointform Pty Ltd landholdings) and estimates for portions of Lyon Road yet to be upgraded in the southern section of the Wandi South Local Structure Plan area south to Anketell Road. This includes **\$496,070** for landscaping and **\$4,391,780** for road construction.

Internal Collector Honeywood Avenue – Asset ID 1.3

The cost for the internal collector road is **\$12,145,409**, which is based on a combination of actuals provided by Satterley Property Group (acting on behalf of the Wandi Anketell Holdings Pty Ltd and Pointform Pty Ltd landholdings) and actuals provided by Terranovis (acting on behalf of the Galati landholding) and estimates provided by the City. This includes **\$1,887,862** for landscaping and **\$10,257,547** for road construction.

Public open space – Asset ID 2.1

The actual and estimated costs for the POS (9.5% of the GSA, deducting the GSA for the Wand District Centre is 12.0853ha) is **\$14,145,738 + \$11,312,018 = \$25,457,756** based upon actuals and estimates for POS improvement and the following:

Land acquisition: **\$1,230,000** per hectare x 11.5006 hectares⁷. Note all credits were provided to developers prior to the CAS 2019 review as development has already occurred for all POS in the DCA area.

Improvement cost rates are detailed in the City of Kwinana DCP Cost Update 2024 Report prepared by Rawlinson's Cost Management dated March 2025.

The improvement costs associated with POS include earthworks, drainage, turfing, reticulation, lighting, fencing, basic furniture and establishment costs for two years.

⁷ Colliers International land valuation November 2017

Wandi Playing Fields – Asset ID 2.2

The Wandi Playing Fields has largely been constructed by the Satterley Property Group, on behalf of the Wandi Anketell and Pointform landholdings. The costing for the Wandi Playing Fields, of **\$7,002,332**, is based upon:

- Land acquisition: **\$2,046,001**. It must be noted that \$296,116.57 has been paid to the landowner for the remaining balance of the playing fields 0.2090ha, however this figure may change dependent on the final valuation figure; and
- Improvement costs (including establishment costs for 2 years): **\$4,956,331**. It must be noted that 0.2090ha of this figure is the remaining balance of the playing fields yet to be constructed.

All development within DCA5 will contribute to 100% of the cost of the item on a land area basis (gross subdivisible area).

District Sporting Ground – Asset ID 3.1

The costs for DCA5 for the District Sporting Ground are estimated at **\$725,430.25** with the proportionate sharing of costs over DCAs 2-7 shown below:

Development Contribution Area	Total site area (ha)	Deductions for GSA	GSA	District Sporting Ground for DCA
DCA 2 - Wellard	134.862	51.038	83.824	\$488,961.37
DCA 3 - Casuarina**	266.98	122.28	144.70	\$844,082.84
DCA 4 - Anketell	141.840	42.245	99.595	\$580,956.40
DCA 5 - Wandi	204.852	66.912	124.363	\$725,430.25
DCA 6 - Mandogalup	111.390	18.662	92.729	\$540,901.73
DCA 7 - Wellard West/ Bertram	524.222	109.362	414.860	\$2,419,952.28
Total	1,384.15	410.50	960.07	\$5,600,284.87

Branch Library (serves Districts A and B) -- Asset ID 4.1

The cost contribution for DCA5 towards the branch library is **\$95,751.92** with the proportionate sharing of costs over DCAs 2-7 shown below:

Development Contribution Area	Total site area (ha)	Deductions for GSA	GSA	Branch Library for DCA
DCA 2 - Wellard	134.862	51.038	83.824	\$ 64,539.62
DCA 3 - Casuarina**	266.98	122.28	144.70	\$ 111,413.27
DCA 4 - Anketell	141.840	42.245	99.595	\$ 76,682.34
DCA 5 - Wandi	204.852	66.912	124.363	\$ 95,751.92
DCA 6 - Mandogalup	111.390	18.662	92.729	\$ 71,395.40
DCA 7 - Wellard West/ Bertram	524.222	109.362	414.860	\$ 319,417.45

Total	1,384.15	410.50	960.07	\$ 739,200.00
** largely estimated figures as only a partial LSP has been adopted by Council				

Local Community Centre – Asset ID 4.2

The cost contribution for DCA 5 towards a local community centre is **\$282,041.41** with the proportionate sharing of costs over DCAs 2-7 shown below:

Development Contribution Area	Total site area (ha)	Deductions for GSA	GSA	Local Community Centre for DCA
DCA 4 – Anketell (North portion only)	115.6103	36.2597	79.3506	\$ 179,958.59
DCA 5 - Wandi	204.852	66.912	124.363	\$ 282,041.41
Total	320.46	103.17	203.71	\$ 462,000.00

District Youth Centre – Asset ID 4.3

The cost contribution for DCA5 towards a district youth centre is **\$387,634.92** with the proportionate sharing of costs over DCAs 2-7 shown below:

Development Contribution Area	Total site area (ha)	Deductions for GSA	GSA	District Youth Centre for DCA
DCA 4 – Anketell (North portion only)	115.610	36.260	79.351	\$ 247,333.29
DCA 5 - Wandi	204.852	66.912	124.363	\$ 387,634.92
DCA 6 - Mandogalup	111.390	18.662	92.729	\$ 289,031.78
Total	431.85	121.83	296.44	\$ 923,999.99

Administrative costs – Asset ID 5.0

Administrative costs are based on actual administration costs incurred in administering the DCP, for the year leading up to the annual review.