

# Kaya Hello

## Waste and Recycling Guide

### 2023/24



Follow us on Facebook  
and join the event for your  
area to receive updates

The City of Kwinana acknowledges the Traditional Custodians of the land on which we live, work and play, the Nyoongar people. We recognise their connection to the land and local waterways, their resilience and commitment to community and pay our respect to Elders past and present.



A Waste Authority Program

This guide is  
printed on 100%  
recycled paper



art.org.au

**RECYCLE THESE 5:**  
hard plastic, glass, cans,  
paper and cardboard

**GIFT STUFF**  
to charity,  
swap or sell

**EARTH-CYCLE**  
food scraps  
into compost

**AVOID EXCESS  
PACKAGING**  
and disposables

**TAKE SPECIAL  
WASTE**  
to drop-offs



**FOR ALL ENQUIRIES**  
Call 1300 293 955 or visit  
[kwinana.wa.gov.au/waste](https://www.kwinana.wa.gov.au/waste)

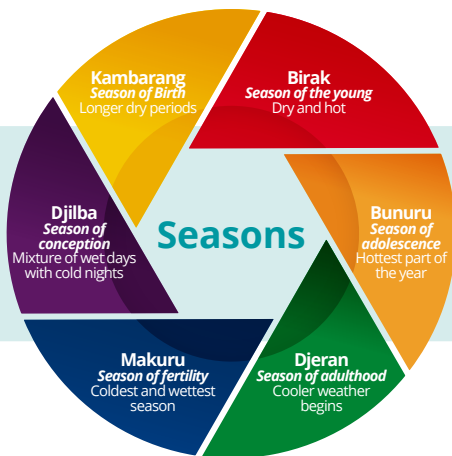


# How to use this guide

Our **Waste and Recycling Guide for 2023/24** is your one stop shop for all things waste and recycling. You will find great info within, making it easier to understand how to be a GREAT Sort and reduce what you put in your general waste bin.

**GREAT Sorts** know that with a bit of sorting your general waste bin could be almost empty each week, making landfill the last resort!

The Nyoongar seasonal calendar includes six different seasons in a yearly cycle.



Find multilingual waste resources on [kwinana.wa.gov.au/bins](http://kwinana.wa.gov.au/bins)



## To do list

- ☐ Go to maps tab for my bin day, recycling week and verge collection dates
- ☐ Mark my key dates
- ☐ Read guide for tips to be a GREAT Sort in Kwinana
- ☐ Scan any of the QR codes for more details

**Want a larger recycling bin?**

Call 1300 293 955  
to upgrade to 360L for free



# JULY

## FAST FACT

There are more plastic particles in our oceans than stars in the sky.  
Let's reconsider our plastic packaging.

MONDAY	TUESDAY	WEDNESDAY	THURSDAY	FRIDAY	SATURDAY	SUNDAY
					1	2
3	4	5	6	7	8	9
10	11	12	13	14	15	16
17	18	19	20	21	22	23
24	25	26	27	28	29	30
31						

**AVOID EXCESS  
PACKAGING**  
and disposables



# MAKURU

**Season of fertility**  
Coldest and wettest season

# AUGUST

## FAST FACT

Last year Kwinana residents recycled 2,346 tonnes through their yellow top recycling bin. Every bin counts, well done Kwinana!

CLICK  
HERE

MONDAY	TUESDAY	WEDNESDAY	THURSDAY	FRIDAY	SATURDAY	SUNDAY
	1	2	3	4	5	6
7	8	9	10	11	12	13
Keep Australia Beautiful Week						
14	15	16	17	18	19	20
21	22	23	24	25	26	27
28	29	30	31			

**ONLY RECYCLE THESE  
5 IN YOUR BIN:**  
hard plastic, glass,  
cans, paper and  
cardboard



Take  
containers to  
participating 10c  
container refund  
points



Three ways  
to recycle



1  
Loose, never in  
bags



2  
Rinsed and free  
from food residue



3  
No lids



# SEPTEMBER

## MONTH OF BIODIVERSITY

This month celebrates the importance of protecting, conserving and improving biodiversity. Why not get involved?



MONDAY	TUESDAY	WEDNESDAY	THURSDAY	FRIDAY	SATURDAY	SUNDAY
				1	2	3
4	5	6	7	8	9	10
11	12	13	14	15	16	17
18	19	20	21	22	23	24
25 King's Birthday	26	27	28	29	30	

Spring clean  
ahead of Bulk  
Waste and  
Garage Sale Trail

**GIFT THE  
GOOD STUFF**  
to charity,  
swap or sell



# DJILBA



**Season of conception**  
Mixture of wet days with cold nights

# OCTOBER

## BULK WASTE 1

In Kwinana, we take hazardous waste to drop off centres and save the good stuff for the Garage Sale Trail.



MONDAY	TUESDAY	WEDNESDAY	THURSDAY	FRIDAY	SATURDAY	SUNDAY
					1 AREA 1 PLACE OUT BULK WASTE	
2 AREA 1 BULK WASTE	3	4	5	6	7 AREA 2 PLACE OUT BULK WASTE	8
9 AREA 2 BULK WASTE	10	11	12	13	14 AREA 3 PLACE OUT BULK WASTE	15
16 AREA 3 BULK WASTE	17	18	19	20	21 AREA 4 PLACE OUT BULK WASTE	22
23 AREA 4 BULK WASTE	24	25	26	27	28 AREA 1 PLACE OUT GREEN WASTE	29
30 AREA 1 GREEN WASTE	31	 <b>Get your verge waste sorted</b>				
		 <b>1</b> Follow place out dates				
		 <b>2</b> Max 3m <sup>3</sup>				
		 <b>3</b> Place and sort piles correctly				

**HOUSEHOLD  
HAZARDOUS  
WASTE**  
drop-offs are free



# NOVEMBER

## GREEN WASTE 1

In November, many people tidy up the garden and prepare for fire season.



CLICK HERE

MONDAY	TUESDAY	WEDNESDAY	THURSDAY	FRIDAY	SATURDAY	SUNDAY
		1	2	3	4	5
					AREA 2 PLACE OUT GREEN WASTE	
6	7	8	9	10	11	12
AREA 2 GREEN WASTE					AREA 3 PLACE OUT GREEN WASTE	
					Garage Sale Trail	
13	14	15	16	17	18	19
AREA 3 GREEN WASTE					AREA 4 PLACE OUT GREEN WASTE	
					Garage Sale Trail	
20	21	22	23	24	25	26
AREA 4 GREEN WASTE						
27	28	29	30	 Register your garage sale at <a href="http://garagesaletrail.com.au">garagesaletrail.com.au</a>		

**EARTH-CYCLE**  
garden waste  
into mulch and  
compost



# KAMBARANG



**Season of birth**  
Longer dry periods

# DECEMBER

## TOP TIP

Make memories, not waste. Gift an experience instead.

MONDAY	TUESDAY	WEDNESDAY	THURSDAY	FRIDAY	SATURDAY	SUNDAY
				1	2	3
4	5	6	7	8	9	10
11	12	13	14	15	16	17
18	19	20	21	22	23	24
25 Christmas Day <i>No bin collection</i>	26 Boxing Day	27	28	29	30	31

AVOID EXCESS  
PACKAGING  
and disposables



**GREAT Sorts  
love:**



**1**  
Reusable gift  
wraps



**2**  
Gifting an  
experience



**3**  
Buying local and  
sustainable

# JANUARY

## HAZARDOUS WASTE

Batteries and aerosols in bins cause truck fires –  
Check out what happens.



MONDAY	TUESDAY	WEDNESDAY	THURSDAY	FRIDAY	SATURDAY	SUNDAY
1 New Year's Day No bin collection	2	3	4	5	6	7
8	9	10	11	12	13	14
15	16	17	18	19	20	21
22	23	24	25	26 Australia Day	27	28
29	30	31				

TAKE HAZARDOUS  
WASTE  
to drop off points.



# BIRAK

Season of the young  
Dry and hot

# FEBRUARY

## GREEN WASTE 2

GREAT Sorts are good neighbours. They keep their street tidy by only placing out two days before their area start date and no more than 3m<sup>3</sup>.



MONDAY	TUESDAY	WEDNESDAY	THURSDAY	FRIDAY	SATURDAY	SUNDAY
			1	2	3	4
					AREA 1 PLACE OUT GREEN WASTE	
5	6	7	8	9	10	11
AREA 1 GREEN WASTE					AREA 2 PLACE OUT GREEN WASTE	
12	13	14	15	16	17	18
AREA 2 GREEN WASTE					AREA 3 PLACE OUT GREEN WASTE	
19	20	21	22	23	24	25
AREA 3 GREEN WASTE					AREA 4 PLACE OUT GREEN WASTE	
26	27	28	29			
AREA 4 GREEN WASTE						

**SORTING FOR  
BULK WASTE?**  
Gift the good  
stuff first



**Be a good  
neighbour**



**1**  
Plan a busy bee  
with your street



**2**  
Help those unable  
to place out their  
waste



**3**  
Apply for a  
Neighbours  
Every Day Grant

**APPLY  
ONLINE**



# MARCH

## BULK WASTE 2

Kwinana residents make sure their waste piles are less than 3m<sup>3</sup>, not on footpaths or roads, and clear from trees, cars and structures.



MONDAY	TUESDAY	WEDNESDAY	THURSDAY	FRIDAY	SATURDAY	SUNDAY
				1	2	3
					AREA 1 PLACE OUT BULK WASTE	
4	5	6	7	8	9	10
AREA 1 BULK WASTE Labour Day WA					AREA 2 PLACE OUT BULK WASTE	
11	12	13	14	15	16	17
AREA 2 BULK WASTE					AREA 3 PLACE OUT BULK WASTE	
18	19	20	21	22	23	24
AREA 3 BULK WASTE					AREA 4 PLACE OUT BULK WASTE	
25	26	27	28	29	30	31
AREA 4 BULK WASTE				Good Friday No bin collection		Easter Sunday

**SEPARATE PILES FOR BULK WASTE:**  
Whitegoods + all metal products, e-waste, mattresses, accepted bulk waste



# BUNURU



Season of adolescence  
Hottest part of the year

# APRIL

## LIVING GREEN

Learn how to live a little greener and sign up to a workshop or activity during the Living Green Series.



CLICK  
HERE

MONDAY	TUESDAY	WEDNESDAY	THURSDAY	FRIDAY	SATURDAY	SUNDAY
1 Easter Monday	2	3	4	5	6	7
8	9	10	11	12	13	14
15	16	17	18	19	20	21
22 Earth Day	23	24	25 ANZAC Day	26	27	28
29	30					

### BOKASHI BINS

Grab a Bokashi from the City for \$50.  
*While stocks last*



Earth-cycling  
is better than  
your general  
waste bin

Try:



Composting



Bokashi bins



Worm farming



# MAY

## GREEN WASTE 3

Get your soil ready for planting season and use your composted materials in your garden. Check out our incentives and programs.



MONDAY	TUESDAY	WEDNESDAY	THURSDAY	FRIDAY	SATURDAY	SUNDAY
		1	2	3	4	5
					AREA 1 PLACE OUT GREEN WASTE	
6	7	8	9	10	11	12
AREA 1 GREEN WASTE					AREA 2 PLACE OUT GREEN WASTE	
13	14	15	16	17	18	19
AREA 2 GREEN WASTE					AREA 3 PLACE OUT GREEN WASTE	
20	21	22	23	24	25	26
AREA 3 GREEN WASTE					AREA 4 PLACE OUT GREEN WASTE	
27	28	29	30	31		
AREA 4 GREEN WASTE						

**EARTH-CYCLE**  
food scraps  
to your chickens,  
compost or worms



# DJERAN



**Season of adulthood**  
Cooler weather begins

# JUNE

## RECYCLE RIGHT

No more confusion! Find out what does and doesn't belong in each of your bins.



MONDAY	TUESDAY	WEDNESDAY	THURSDAY	FRIDAY	SATURDAY	SUNDAY
					1	2
3 WA Day	4	5	6	7	8	9
10	11	12	13	14	15	16
17	18	19	20	21	22	23
24	25	26	27	28	29	30

### GREAT SORTS

have a dedicated recycling tub in their kitchen



In Kwinana we:



1 Flatten cardboard boxes



2 Keep items loose and never bagged



3 Keep textiles out of the recycling bin

# GREAT SORTS

BE A KWINANA  
GREAT SORT

Join the many Kwinana residents doing GREAT things with their waste.



## G is for Gifting

things to charity, swapping or selling.

## R is for Recycling

only these 5 things: hard plastic, glass, cans, paper and cardboard.

## E is for Earth-cycling

food scraps and garden waste into compost.

## A is for Avoiding

excess packaging and disposable containers.

## T is for Taking

batteries, e-waste and chemicals to special drop-off points.

**Be a GREAT Sort ... Landfill is the last resort!**



# MAKURU

Season of fertility  
Coldest and wettest season

# BIN COLLECTIONS

**BIN COLLECTION  
ENQUIRIES**

Call 1300 293 955



## Hazardous Waste Info

There are some items that do not belong in the general waste or recycling bin. Check out our **Hazardous Waste** page for where to take them: [www.kwinana.wa.gov.au/HHW](http://www.kwinana.wa.gov.au/HHW)



Batteries



Paint



Electronic waste



Oil



Fluorescent lights



Aerosols

Soft plastics



Nappies/sanitary items

Food scraps



Place on kerb by 6am on collection day



Keep bin weight below 70kg



Ensure lid is fully closed



Return bins to your property as soon as possible



Collection times may vary. If you think your bin has been missed please call 1300 293 955

Hard plastics



Recycle only these five

Glass



Cans



Loose, lids off, and rinsed



## BIN COLLECTIONS

# VERGE COLLECTIONS

## GREEN WASTE

VERGE COLLECTION  
ENQUIRIES

Call 1300 867 166



Follow place out dates



Only place items on own verge



Sort piles correctly

<3m<sup>3</sup>

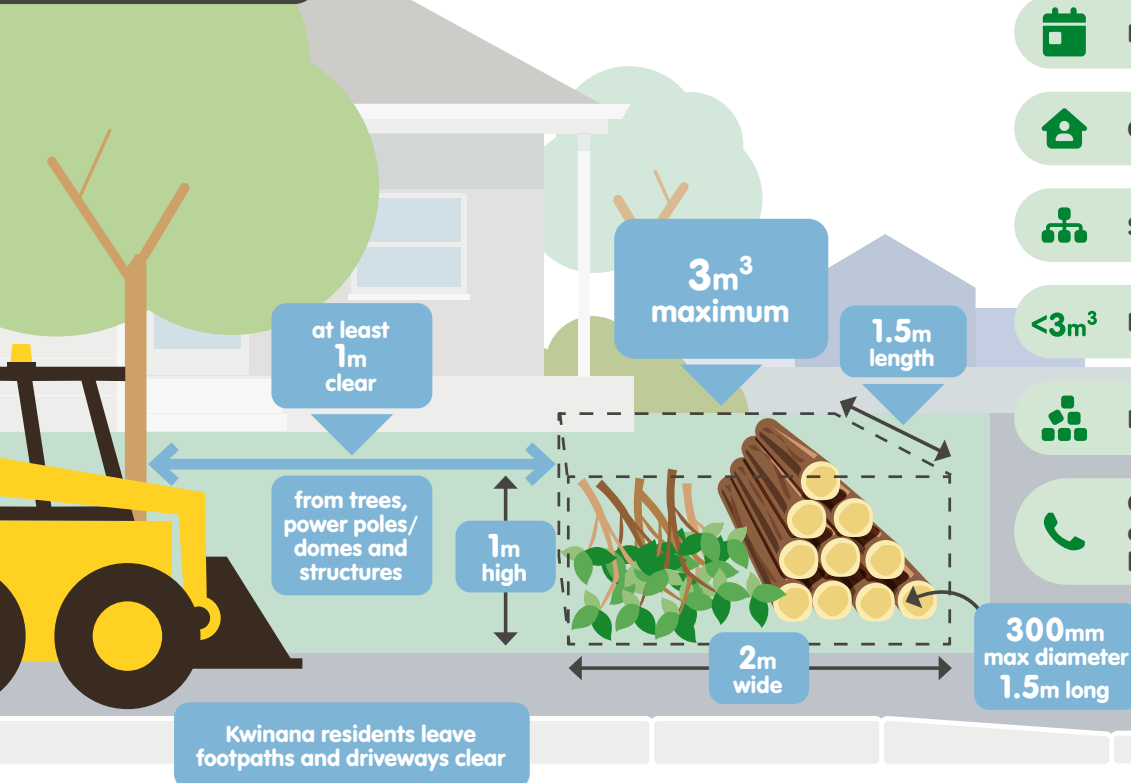
No bigger than 3 cubic metres



Keep pile tidy



Call within 7 days of your scheduled collection week if your waste has not been collected



## Items not for green waste collection

- × bags, boxes or piles of leaves, grass, weeds or plant roots
- × general rubbish, sand and soil

### For verge collections:



1. Put time aside for bulk and green waste collections



2. Gift, sell or swap any useful items



3. Call us if you need advice on how or where to place your pile





# HAZARDOUS WASTE

## HOUSEHOLD HAZARDOUS WASTE

These items are not safe for bins or verge collection.  
Find out where to take your hazardous waste here.

CLICK  
HERE



PER ITEM



Aerosols



Chemicals



Smoke detectors



Fire extinguishers



Gas cylinders



Batteries



Electronic waste



Fluorescent lights



Paint and thinners



Oil

In Kwinana, we take hazardous waste to:

- 1. Millar Road Landfill and Recycling Facility 9528 8550**  
204 Millar Road West, Baldivis
- 2. Henderson Waste Recovery Park 9411 3444**  
920 Rockingham Road, Henderson

FREE  
OF CHARGE

Hazardous waste such as chemicals, batteries and aerosol cans cause truck fires. Help us avoid this by disposing of your waste correctly.



RECYCLE RIGHT

Find out how to dispose of your waste correctly and your closest drop off location by visiting Recycle Right at [recycleright.wa.gov.au](https://recycleright.wa.gov.au)

CLICK  
HERE



# WHAT'S NEW

## ORGANICS THIRD BIN

The City is investigating the introduction of a third bin for organic waste. Recent consultation found that 65% of residents were supportive of adding a third bin to their home.

Visit [lovemykwinana.com](https://lovemykwinana.com) for more details and ongoing community consultation.



## WASTE LOCAL LAW

The introduction of our Waste Local Law means residents can be part of a greater community movement to manage waste and recycling in a more sustainable manner, improving resource recovery and protecting expensive infrastructure, our community and environment.

### FIND OUT MORE

Read about our Waste Local Law by visiting [kwinana.wa.gov.au/wastelocallaw](https://kwinana.wa.gov.au/wastelocallaw)

## TAKE A TOUR OF OUR RECYCLING FACILITY!

Ever wondered what happens to your recycling once our trucks collect it?

Take a 360° virtual tour of the Veolia Bibra Lake Material Recovery Facility (MRF) and see first hand how we sort the contents of the yellow top recycling bins!



## NEW COLOURED BINS!

Supporting its commitment to sustainability, the City will be phasing in black body bins for new and replacement services. Black body bins are made from 100% recycled plastic recovered from old bins.

The City will also be phasing in red lids for new and replacement waste bins to meet current Australian Standards.



## LITTER AND ILLEGAL DUMPING

The City recently introduced the Litter and Illegal Dumping Plan with the aim to reduce environmental, financial and visual impacts.

You can help! If you see something, please say something!



Report it online or call us on 9439 0200



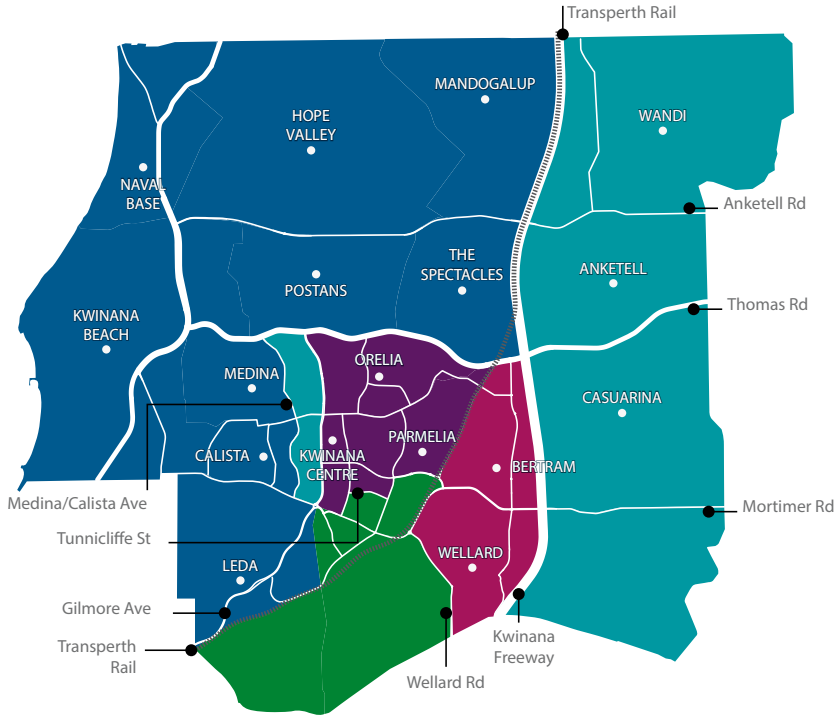
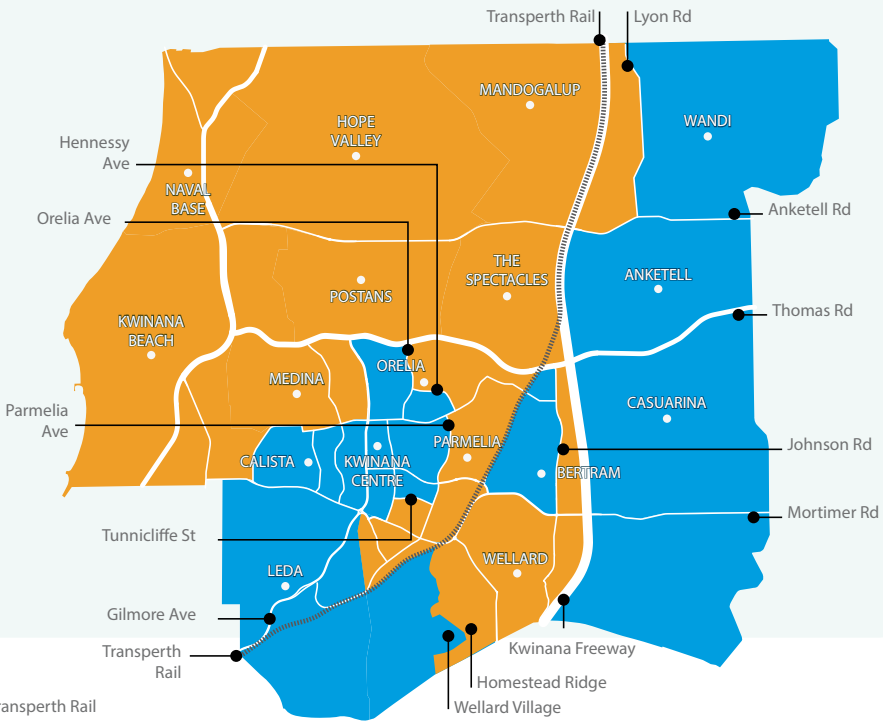
# RECYCLING WEEK

- Week 1
- Week 2

**BIN COLLECTION ENQUIRIES**  
Call 1300 293 955

CLICK HERE





## BIN DAY

- Monday
- Tuesday
- Wednesday
- Thursday
- Friday

# VERGE COLLECTIONS

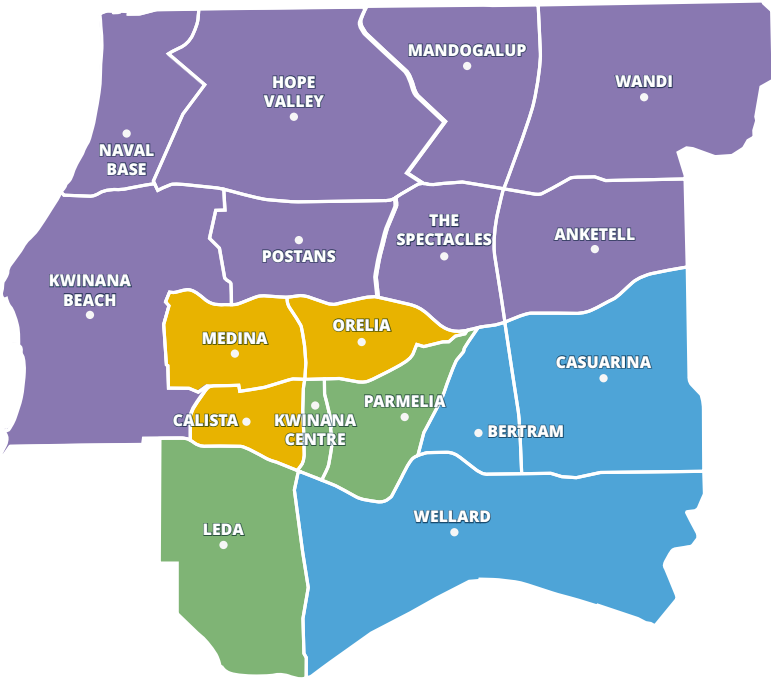
(Residential properties only)

VERGE COLLECTION  
ENQUIRIES

Call on 1300 867 166 or  
follow our Verge Collection  
events on Facebook



ONLY  
Place out  
two days  
before



- Area 1
- Area 2
- Area 3
- Area 4

Area	1	2	3	4	
Bulk 1	2 Oct	9 Oct	16 Oct	23 Oct	2023
Green 1	30 Oct	6 Nov	13 Nov	20 Nov	
Green 2	5 Feb	12 Feb	19 Feb	26 Feb	
Bulk 2	4 Mar	11 Mar	18 Mar	25 Mar	2024
Green 3	6 May	13 May	20 May	27 May	

The City aims to complete collection in each area within two weeks of the above start dates. Some items including mattresses are collected separately within this time.

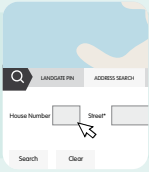
Call within 7 days of your scheduled collection week if your waste has not been collected.

## CHECKING ONLINE FOR INFO ABOUT YOUR SERVICE?

To check your bin days and verge collection dates go to [kwinana.wa.gov.au/mywasteday](https://kwinana.wa.gov.au/mywasteday)



1. Click on the 'Address Search' tab located in the bottom left section of the page



2. Insert your address and select search



3. Write your details below and keep your guide in a safe place

## MAPS | MY KEY DATES

My Recycle Week: 1 2

My Bin Day: M T W T F

My Verge Collection: 1 2 3 4

## Other Information

### City of Kwinana Administration

☎ 9439 0200

✉ [customer@kwinana.wa.gov.au](mailto:customer@kwinana.wa.gov.au)

🌐 [www.kwinana.wa.gov.au](http://www.kwinana.wa.gov.au)

### Bins

☎ 1300 293 955

🌐 [www.kwinana.wa.gov.au/bins](http://www.kwinana.wa.gov.au/bins)

### Verge Collection

☎ 1300 867 166

🌐 [www.kwinana.wa.gov.au/vergecollection](http://www.kwinana.wa.gov.au/vergecollection)

### Litter and Illegal Dumping

☎ 9439 0200

🌐 [www.kwinana.wa.gov.au/litter](http://www.kwinana.wa.gov.au/litter)



Kwinana residents go to Recycle Right to learn about how to recycle, reduce their waste and live more sustainably.

Visit [recycleright.wa.gov.au](http://recycleright.wa.gov.au)



Adopt-a-Spot empowers individuals, community groups, businesses and schools to contribute to a cleaner environment. Keep Australia Beautiful provide free resources and clean-up kits to help registered volunteers keep their chosen area clean.

Find out how to Adopt-a-Spot by visiting [kabc.wa.gov.au/get-involved/adoptaspot](http://kabc.wa.gov.au/get-involved/adoptaspot)



ent.org.au

Printed on FSC® paper with soy-based ink.